



The Cornerstone of Central Luzon's Progressing East



Artist's rendition only and subject to change

Ayala Land's Trade and Commerce Center in Bulacan

Filling in the gap for commercial developments along the highly industrialized Plaridel Bypass Road corridor, Crossroads is primed to be Bulacan's newest commercial core.



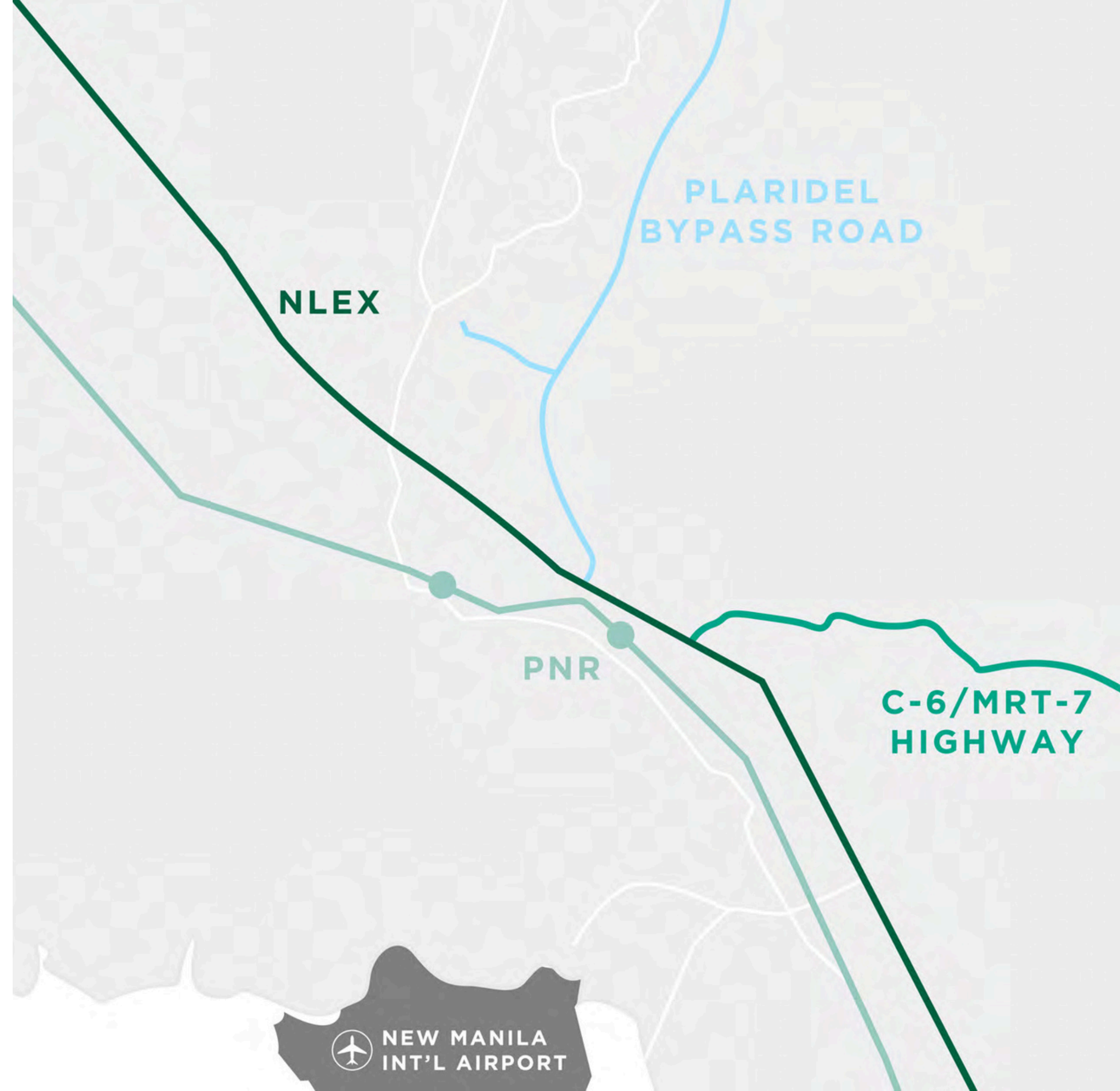
DISTANCE

4.0km NLEX Balagtas Exit

Bulacan BIR District Office

6.0km NLEX Sta. Rita Exit

PNR Balagtas Station





PROJECT SUMMARY

TYPE OF DEVELOPMENT	Commercial Lots
LAND AREA	17.76 ha for Ph1 & Ph2
OPEN FOR SALE	67 Shophouse Lots
LOT SIZE	310 sq.m. - 1,649 sq.m.
AVE. SELLING PRICE/SQM	P78,750 to P85,000 per sqm.
TOTAL CONTRACT PRICE	P26.2M to P133.3M

-  Commercial Lots for Sale
-  Central Park
-  Activation Block



ALLOWED USES

Commercial spaces with the option for residential or apartment dwellings in the upper levels.

Commercial uses

Food and Non-Food

Office

Bed and Breakfast Type of Accommodations

RESTRICTIONS

Industrial Plant

Factory and Machine Shops

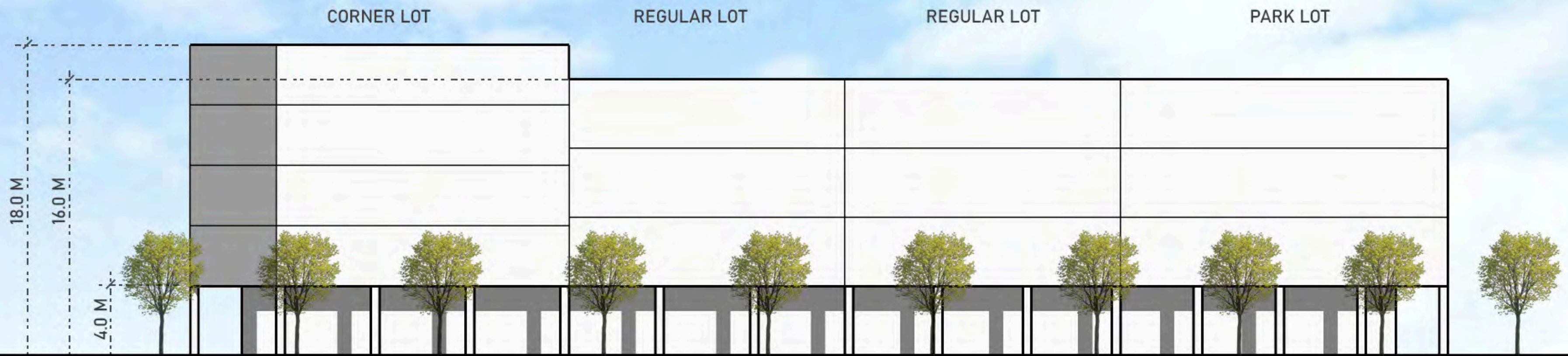
Funeral Parlor

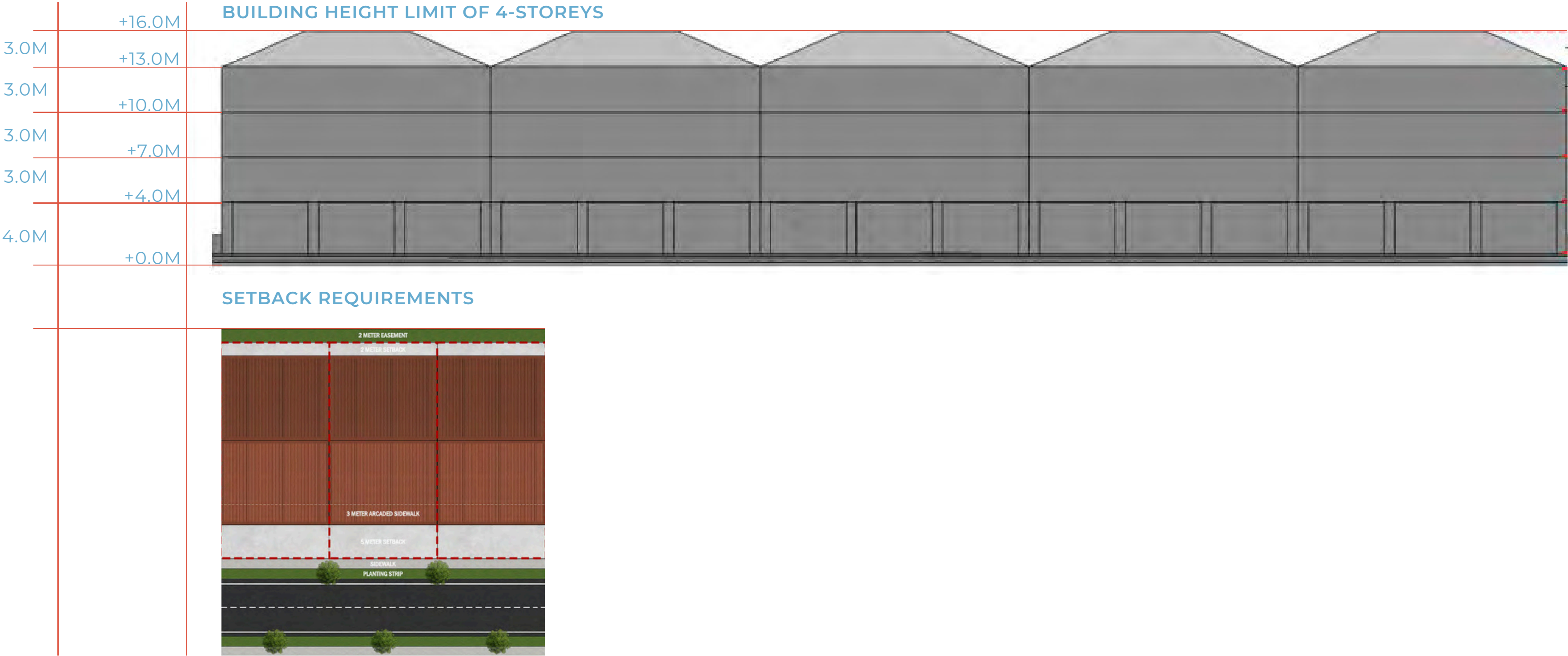
Gambling Dens and Establishments of Ill-Repute

Lumberyard and Junkshop Centers

Vulcanizing Shop

Building Height Guideline — Typical Block





Glass Ratio

FACADE
+30%

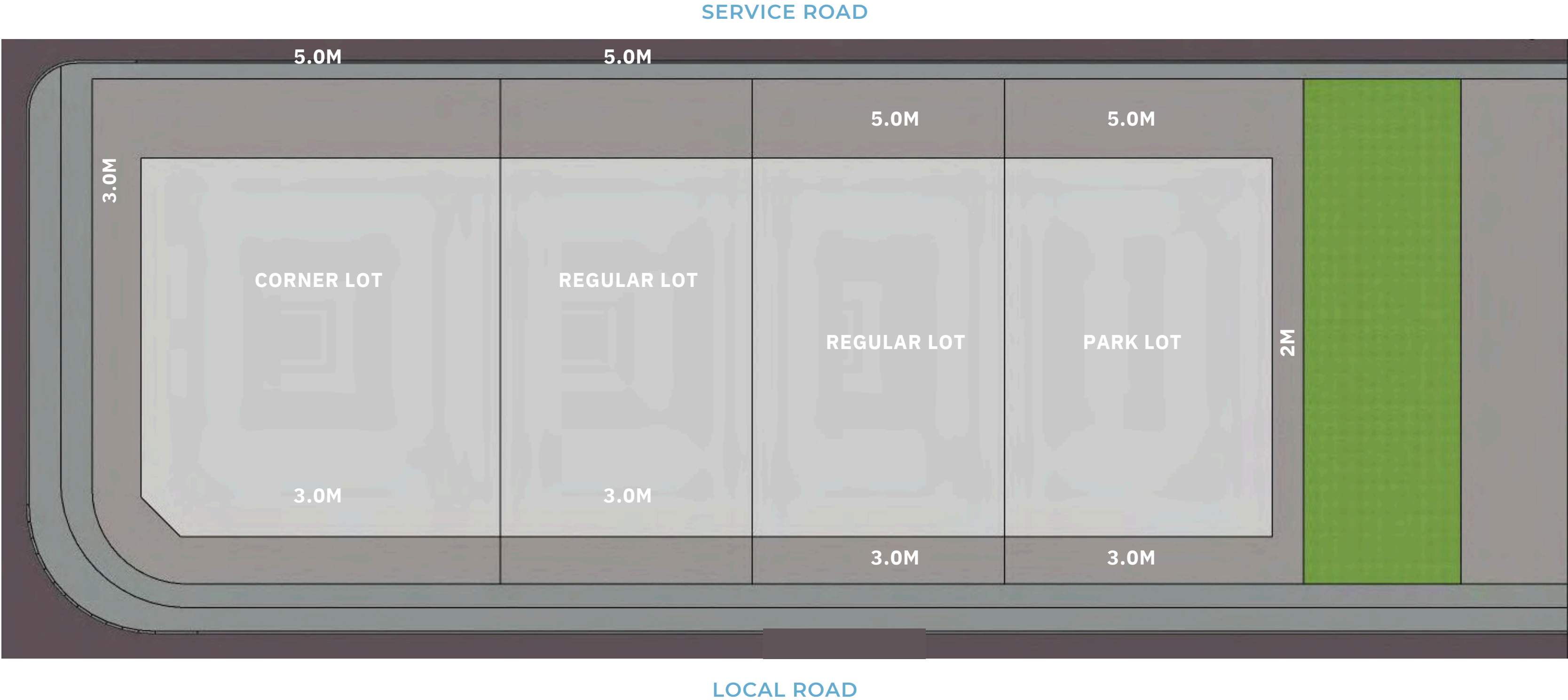


REAR
15-20%



Artist's rendition only and subject to change

Setback Requirement — Typical Block



Phase 1 map

Site Completion 71%



Phase 2 map

Site Completion 32%

